

In Conclusion

In conclusion I can say that the Webboat4G exceeded my expectations and that of the other two on board. I can see the easy application of the antenna on any vessel that is used along coastal waters, from recreational sailing, fishing and cruising vessels to commercial vessels such as tugs, ferries and commercial fishing operations.

"We found the web boat to significantly outperform our mobile handsets for internet access in both inshore and offshore waters. It (the Webboat4G) offers an easy to use, cost effective solution to those looking for high speed internet at sea and those that don't want the added expense and slow speeds of satellite equipment."

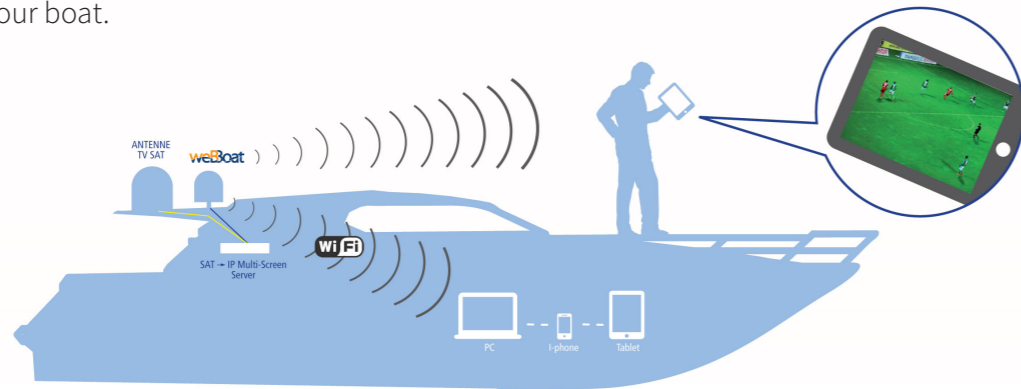
Kyle Carlson
Senior technician/ Sales consultant
Trymax Marine Electronics QLD

Personal entertainment on your mobile devices

Thanks to the weBBoat you can watch Satellite TV programs on your smartphone, tablet or PC via wireless connection. With Sat IP, be free to watch TV whenever you want on your boat.

SAT > IP

Multi-screen server
Satellite TV Reception



A Fishing Trip Made Better with WebBoat 4G



PRODUCT TRIAL
MORETON BAY, QLD

To get a better idea of how the Webboat4G worked in comparison with standard mobile reception, a field test was required, and what better test than a boy's fishing trip..



Scott Harradine, TMQ Electronics
Technical Sales Representative &
High Seas Technician

Introduction

The Webboat4G is a new product from Glomex Italy that enables the use of 4G mobile data /WiFi LTE while at extended distances from mobile towers. For the Australian marine market this is extremely unique, given the expanse of our coastline, mobile towers are spread fairly thin and even in well populated areas, 4G coverage areas are limited and patchy.

While having mobile data may not seem integral to the traditional operation or enjoyment of a boat in Australia, the ever increasing need for connection to social media as well as the all convenience that the rest of the internet has to offer, means that more and more people want to have data and internet access, no matter what they are doing or where they are.

Team this with the constant increase in new tech coming from marine electronics manufacturers that benefit from internet access, then it is easy to see the advantage in the new Webboat4G.



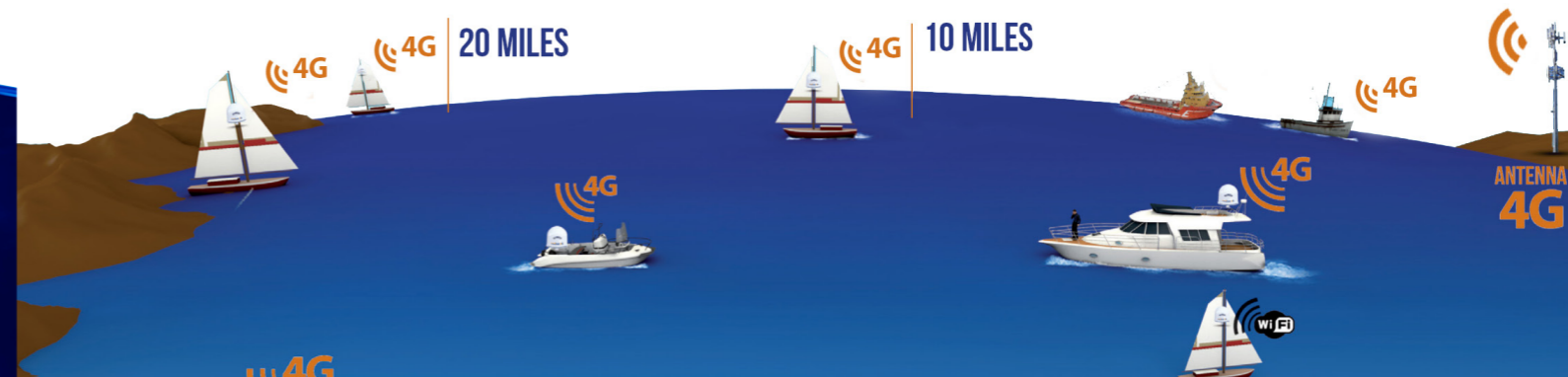
Visit us online: www.tmq.com.au

Head Office - Brisbane Australia
1/18 Alexandra Place
Murarrie, Qld 4172 Australia

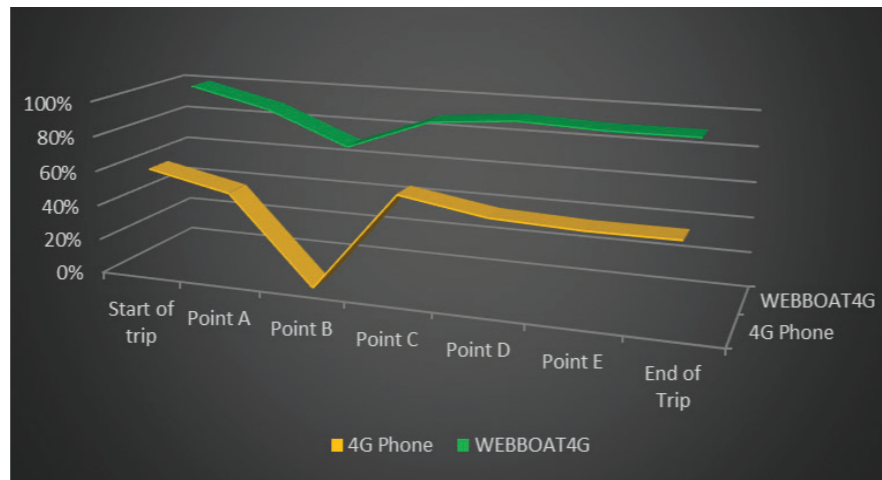
Postal Address:
PO Box 3348
Tingalpa, DC Qld 4173

A MEMBER OF THE AMI GROUP

Ph: 61 7 3640 5600
Fax: 61 7 3540 5699
ABN: 61069120510



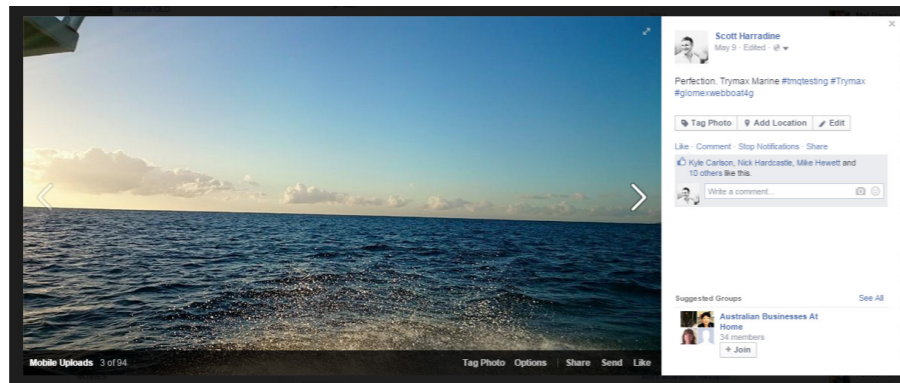
To get a better idea of how the Webboat4G worked in comparison with standard mobile reception, a field test was required, and what better test than a boy's fishing trip? Along with a Team member from our experienced local dealer *Trymax Marine Electronics* we headed out for a day of offshore fishing, to give us the best comparison we mounted the Webboat4G inside the aluminum cab on the dash, at the same height as what the other mobile devices on board were located.



Representation of signal strength comparing Webboat4G to 4G Phone

Our first indication of the Glomex antennas superior reception was actually in the marina itself, the Manly Marina is infamous for its poor phone and TV reception, all three of our phones dropped down to the bottom edge of 3G reception, however when we checked the status of the Webboat4G we had 100% 4G signal. Heading across Moreton Bay towards South Passage Bar (a 40 min trip) during which the Webboat4G never dropped below 90% 4G signal, however numerous times all of our phones dropped to 3G and GSM and once as we looped through the Rous Channel we all dropped to emergency only.

By the time we got through the bar we were already impressed with the performance of the antenna, but while we stopped to get some live bait just outside the bar I decided to do some live speed tests which resulted in 5.8Mbps download and 3.98Mbps upload, and as a final test a nice morning Facebook picture upload was in order:



Strong Performer:
5.8Mbps Download | 3.98Mbps Upload

The Tech

All mobile phone towers have a built in sequence or "timeslot" for all their connected devices, as a device gets further away it begins to miss its timed spot in the sequence, if this happens to much it is then booted to a lower and slower frequency i.e. dropping for 4G to 3G because you moved to far away from a tower.

The Webboat4G, uses smart programming of its diversity modem to stay in the sequence for greater distances. The antenna itself uses a high gain dual diversity antenna system that is directly connected to the modem/gateway in the antenna, this in turn eliminates any cable loss that conventional 3G or "cell phone" antenna's systems have.

The maximum range of the antenna is still limited to the maximum range of the nearest tower, however the above features enable the higher and faster frequencies to be used up to 50% further then its traditional limits.



TMQ International Pty Ltd
Visit us online: www.tmq.com.au
Freecall (Australia Wide) 1800 777 835

Head Office - Brisbane Australia
1/18 Alexandra Place Murarrie, Queensland, 4172 Australia

Other than the increase in 4G and 3G range, where the Webboat4G also shines is its simple use, a mobile data sim card is inserted into the bottom of the antenna itself, the user then logs onto the WiFi network of the antenna using their unique password, just like their home or office WiFi and that's it!

The user can also download a Glomex app to their mobile phone device to monitor the status of the antenna if they wish, or connect the antenna to an external WiFi hotspot such as that at a marina or yacht club.

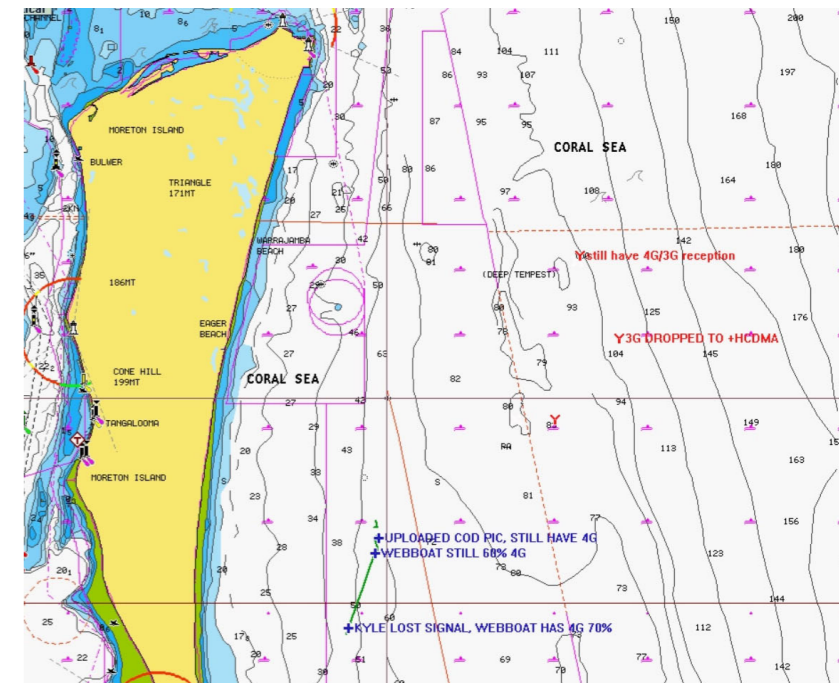


SIM Card Slot

Inshore & Offshore Testing

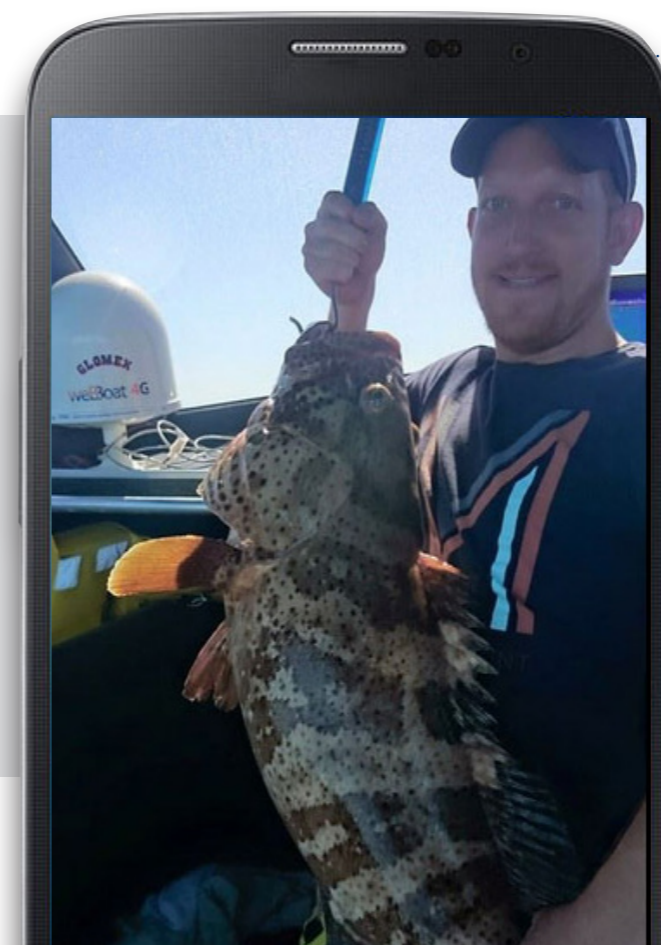
For the majority of the morning we stayed in 5nm range of the Eastern side of Moreton island, now while this doesn't seem like a large range, what makes this range impressive is that the only towers on Moreton Island are located at the Tangalooma resort and the Bulwer community on the western side.

At both sites the towers are only big enough to service the immediate area, so for us to have 4G 5nm east of the island itself was quite amazing.

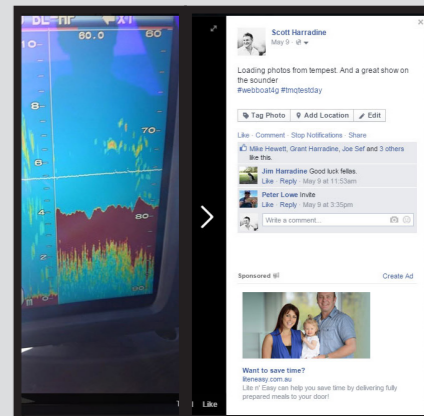


(Right) Chart showing 4G Reception around Moreton Island

The morning also resulted in a few good catches. Which were of course uploaded immediately.



For the afternoon we headed further west, to an area known as Deep Tempest (can be seen on most charts), the area is in 100m of water and is +9 nm east of Moreton Island, and for the first time the Webboat4G dropped down to 3G and after another few nautical miles down to +HCDMA, however even then I was still able to upload to facebook within seconds.



Due to weather and time we decided to call it a day and head on home.